

MONTHLY MEMBERSHIP PROGRESS REPORT

LOCATION TENNESSEE

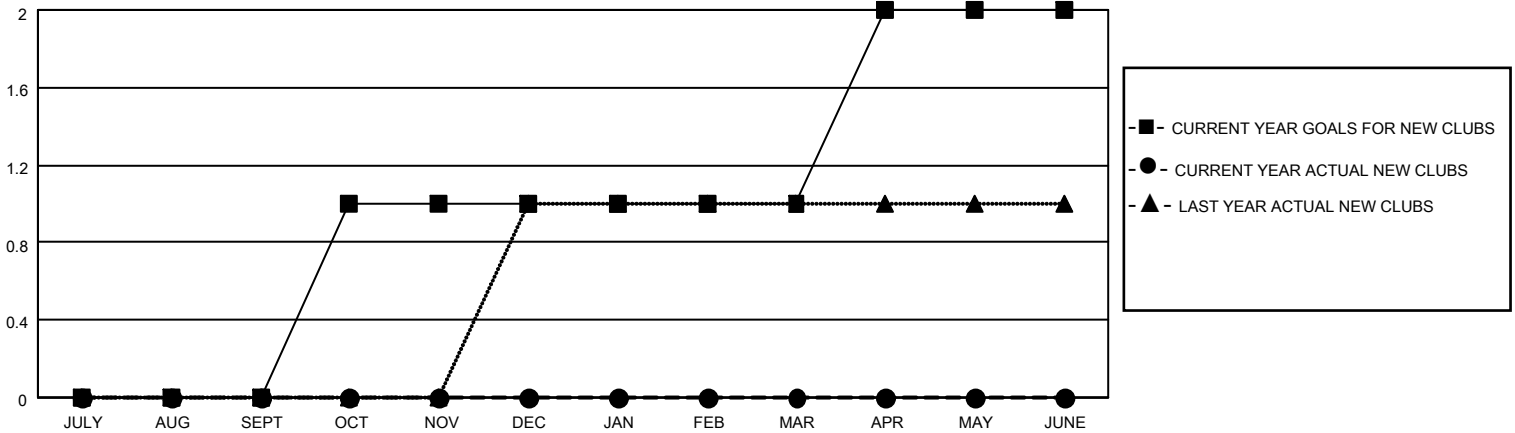
District 12 L

Results as of: 6/30/2023

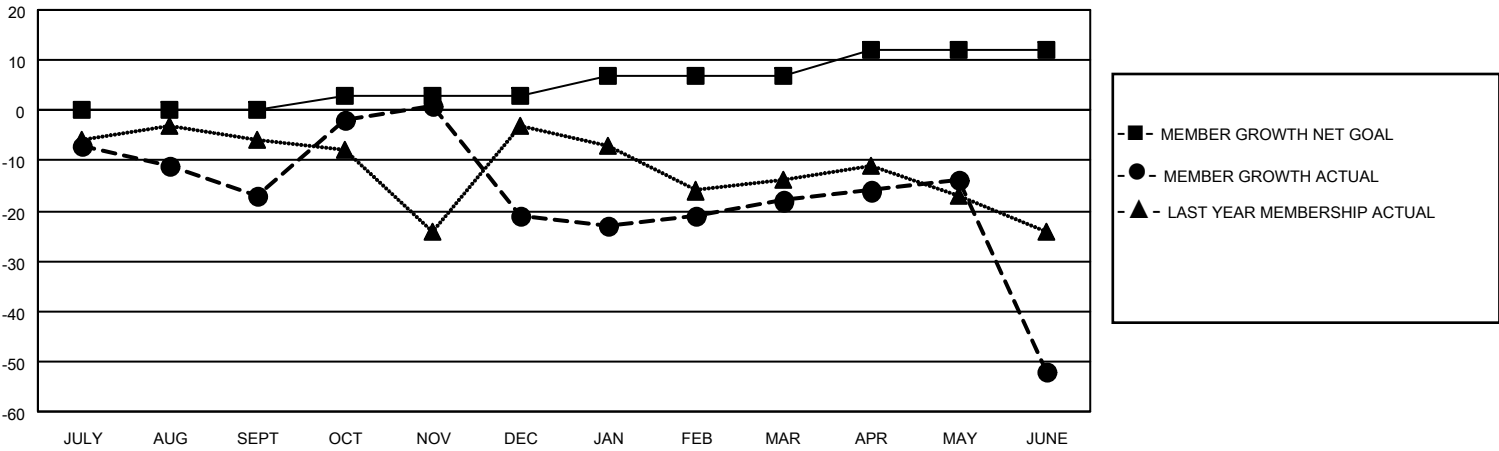
Clubs			
RESULTS FOR 2022-2023			
QUARTER	NEW CLUB GOAL	NEW CLUBS	DROPPED CLUBS
JULY/AUG/SEPT	0	0	0
OCT/NOV/DEC	1	0	2
JAN/FEB/MAR	0	0	0
APR/MAY/JUNE	1	0	2

Members			
RESULTS FOR 2022-2023			
QUARTER	MEMBER GROWTH NET GOAL	MEMBER GROWTH ACTUAL	DROPPED MEMBERS ACTUAL (including transfers)
JULY/AUG/SEPT	0	9	26
OCT/NOV/DEC	3	28	30
JAN/FEB/MAR	4	14	9
APR/MAY/JUNE	5	13	44

GOALS AND ACTUAL NEW CLUBS CUMULATIVE



GOALS AND ACTUAL MEMBERS CUMULATIVE



DROPPED CLUBS: 4	
<u>DROPPED MEMBERS</u>	
DECEASED	10
CLUB CANCELLED	30
OTHER	69
TOTAL	109

17 CLUBS OF 36 ADDED 1 OR MORE NEW MEMBERS

[CLICK HERE FOR CUMULATIVE MEMBERSHIP DATA](#)

<u>GENDER DISTRIBUTION</u>	
MALE	410 (65.08%)
FEMALE	220 (34.92%)
NON BINARY	0 (0.00%)
PREFER NOT TO ANSWER	0 (0.00%)
TOTAL FAMILY UNIT MEMBERS	77
FAMILY MEMBERS PAYING HALF DUES	39